

HOWELL MILL ROAD OUTFALL SEWER IMPROVEMENTS

PROJECT OVERVIEW

The City of Atlanta is continuing the implementation of a comprehensive program to upgrade its existing large diameter system to eliminate sanitary sewer overflows and capacity limitations while meeting the requirements of the Second Amendment to the First Amended Consent Decree (FACD). To accomplish this, the existing 8-inch aerial sanitary sewer will be realigned, and roughly 1,500 linear feet 4-inch diameter forcemain transitioning to an 8-inch diameter gravity sewer and new duplex pump station will be constructed. Located in the Peachtree Creek Sewer Basin, the Outfall conveys sewage from the Peachtree Battle community to the 90-inch diameter Peachtree Creek Trunk sewer that also traverses through the footprint of Atlanta Memorial Park.

WHAT KIND OF WORK WILL BE PERFORMED?

The City uses various techniques to repair old deteriorated sewer lines. The scope of this project and method of construction will consist of open-cut replacement and trenchless methods, demolition of the existing aerial sewer, as well as manhole rehabilitation.

WHAT ARE THE BENEFITS OF THE PROJECT?

Structural upgrades to the system are necessary to maintain the reliability of the sewers. Realignment of the aerial sewer and construction of an upsized sewer will allow for added system capacity to accommodate future growth and development within the community, reduce the amount of extraneous flows, infiltration and inflow (I/I) entering the system, as well as reduce the amount of untreated sewage flowing into streams and creeks because of sanitary sewer overflows. The improvements will extend the life of the sewer 50+ years while meeting the requirements of the Second Amendment to the First Amendment to the First Amended Consent Decree (FACD).

WHO WILL BE IMPACTED?

The work includes system improvements to the outfall line sewer located in the Peachtree Creek Basin. The City will be working within sewershed PTC01_02C1. The work affects Council District 8. Disruption of service, partial/ temporary lane and road closures, work on private property and noise may occur because of construction. However, we will notify impacted residents and businesses through mailings, door hangers or face-to-face prior to work starting in the area. City representatives also will attend NPU and community meetings to discuss planned work and provide periodic updates.

HOW LONG WILL THIS TAKE?

Construction is anticipated to last approximately 6 months. While work is taking place, we will make every effort to minimize any impacts on residents and business owners.

Project Start: 1st Qtr. 2019

Estimated Project End: : 3rd Qtr. 2019

Project Manager: Mikita Browning

Contractor(s): Ruby-Collins, Inc.



FACT SHEET



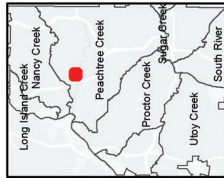
City of Atlanta
Mayor Keisha Lance Bottoms

Atlanta City Council

Felicia Moore *President*
Carla Smith *District 1*
Amir R. Farokhi *District 2*
Antonio Brown *District 3*
Cleta Winslow *District 4*
Natalyn Mosby Archibong *District 5*
Jennifer N. Ide *District 6*
Howard Shook *District 7*
J.P. Matzigkeit *District 8*
Dustin Hillis *District 9*
Andrea Boone *District 10*
Marci Collier Overstreet *District 11*
Joyce Sheperd *District 12*
Michael Julian Bond *Post 1 at Large*
Matt Westmoreland *Post 2 at Large*
Andre Dickens *Post 3 at Large*

Kishia L. Powell
Commissioner
Department of Watershed Management

CITY OF ATLANTA, DEPARTMENT OF WATERSHED MANAGEMENT



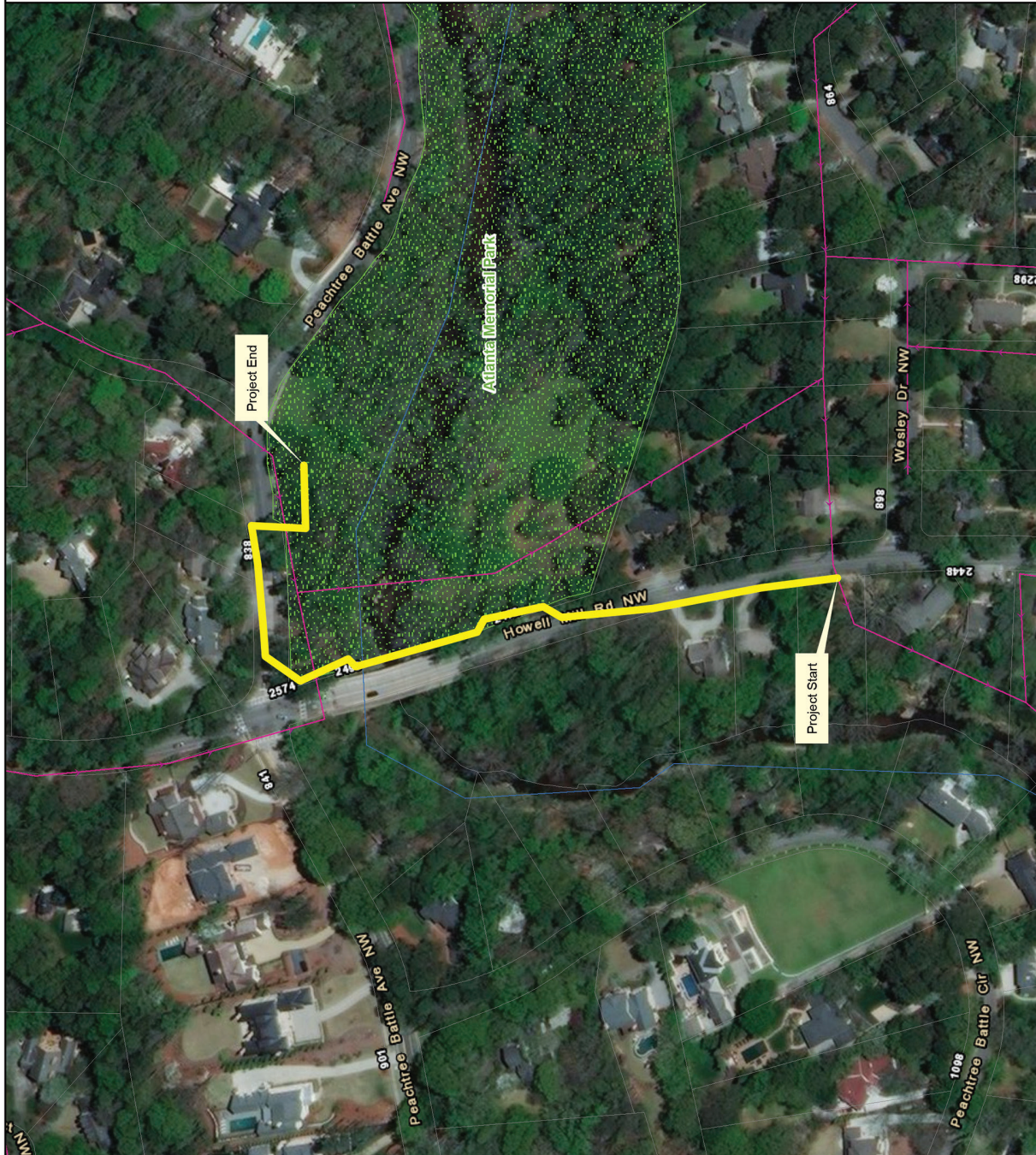
Legend

- Proposed Force Main
- Existing Sewer Route
- Major Hydrology
- Parcels
- Parks

HOWELL MILL RD OUTFALL SEWER IMPROVEMENTS

Proctor Creek Basin

Atlanta, Georgia



CITY OF ATLANTA DEPARTMENT OF
**watershed
management**

CLEAN WATER ATLANTA



DWM Customer Service: 404-546-0311
www.atlantawatershed.org/cleanwateratlanta

Clean Water Atlanta is a comprehensive program created to ensure clean drinking water, clean streams and a healthy environment for the City of Atlanta and its downstream neighbors. To learn more about Clean Water Atlanta please visit our website www.Atlantawatershed.org/cleanwateratlanta or call 311.