

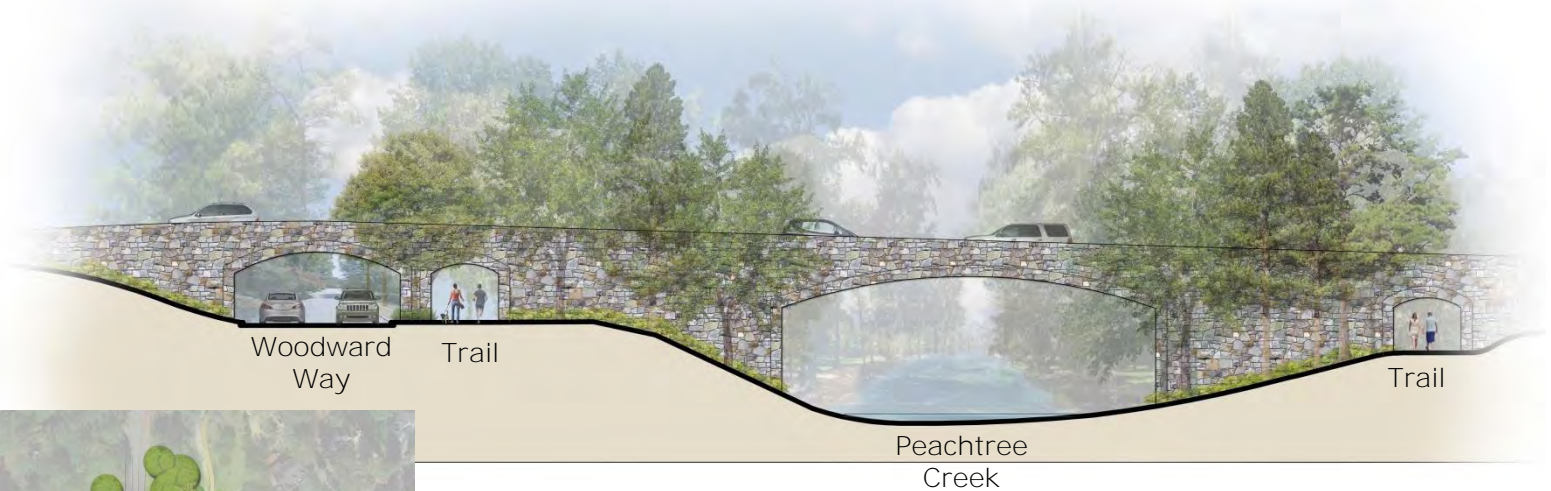
TRAIL SURFACES

Throughout the park, one of the most important aspects of design is the trail system. Different criteria such as terrain, location, use, views, and character of the area should be strongly considered when selecting the material for each trail.



NORTHSIDE DRIVE BRIDGE

HGOR



Section A-A'

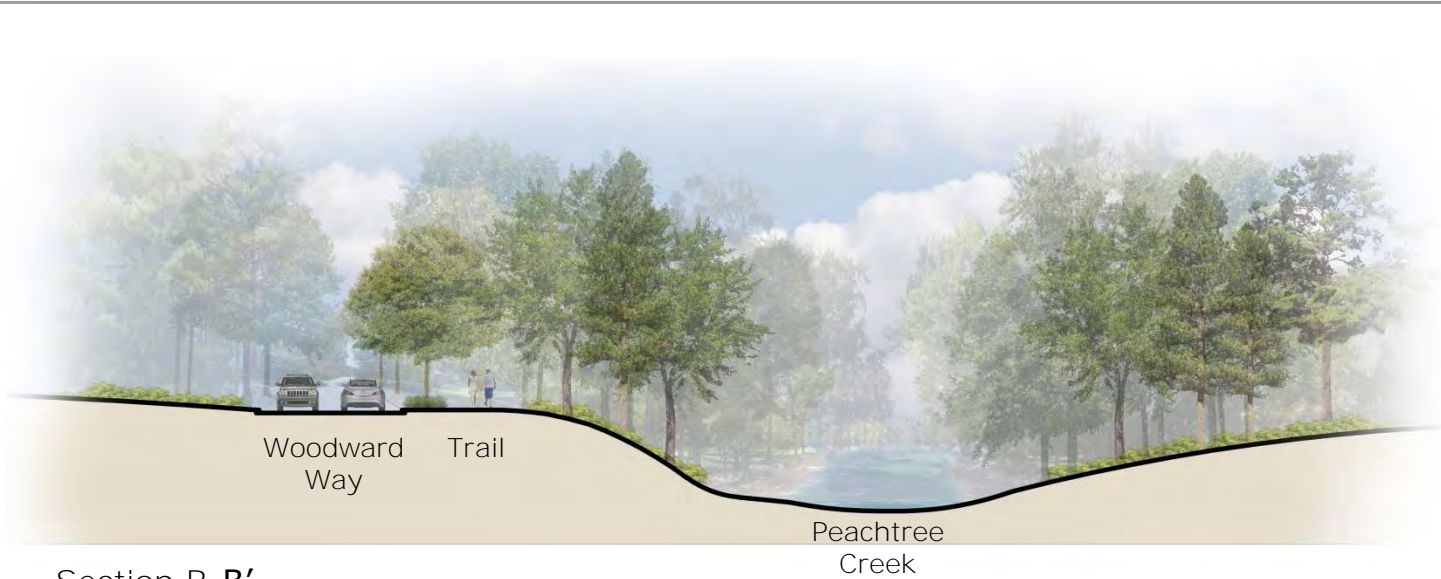


Proposed Enhancements

Raising the Northside Drive bridge creates an uninterrupted flow of vehicular and pedestrian traffic along Woodward Way. The bridge also raises Northside Drive enough to greatly reduce the risk of flooding in the event of a major rainfall.

WOODWARD WAY ROAD DIET

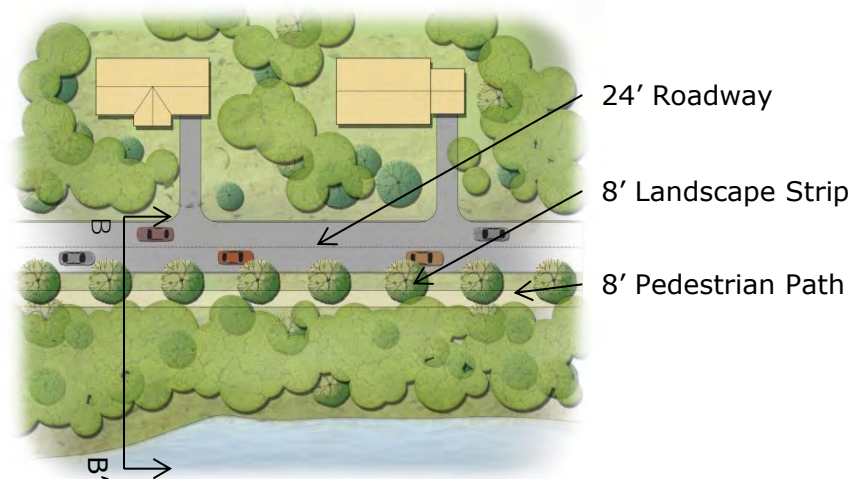
HGOR



Section B-B'



Existing Conditions



Proposed Enhancements

ENLARGED PASSIVE GREENSPACE

HGOR



Replace curbing along Wesley Dr.

Keep area for dog park in Northwest section of park

Enhance walkability

Remove invasive plants

Restore landscape with native materials

Reorganize lawn and tree plantings

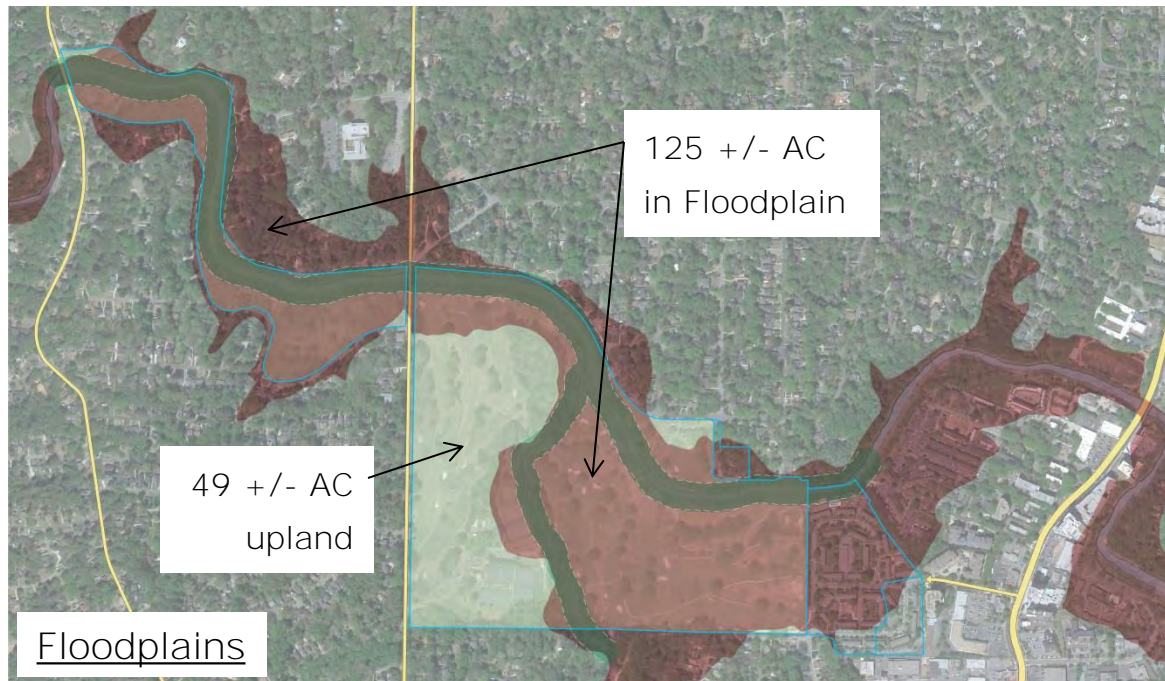
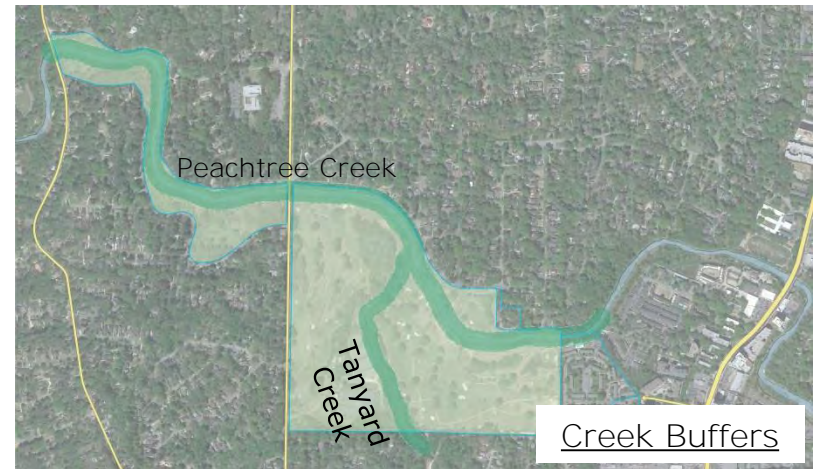
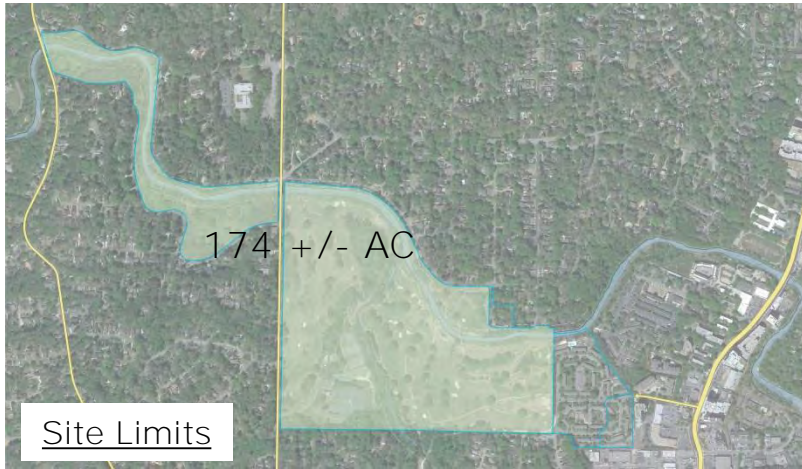
Removal of dying trees

Raise canopy for visibility

Biofilter cover for two sewer siphons

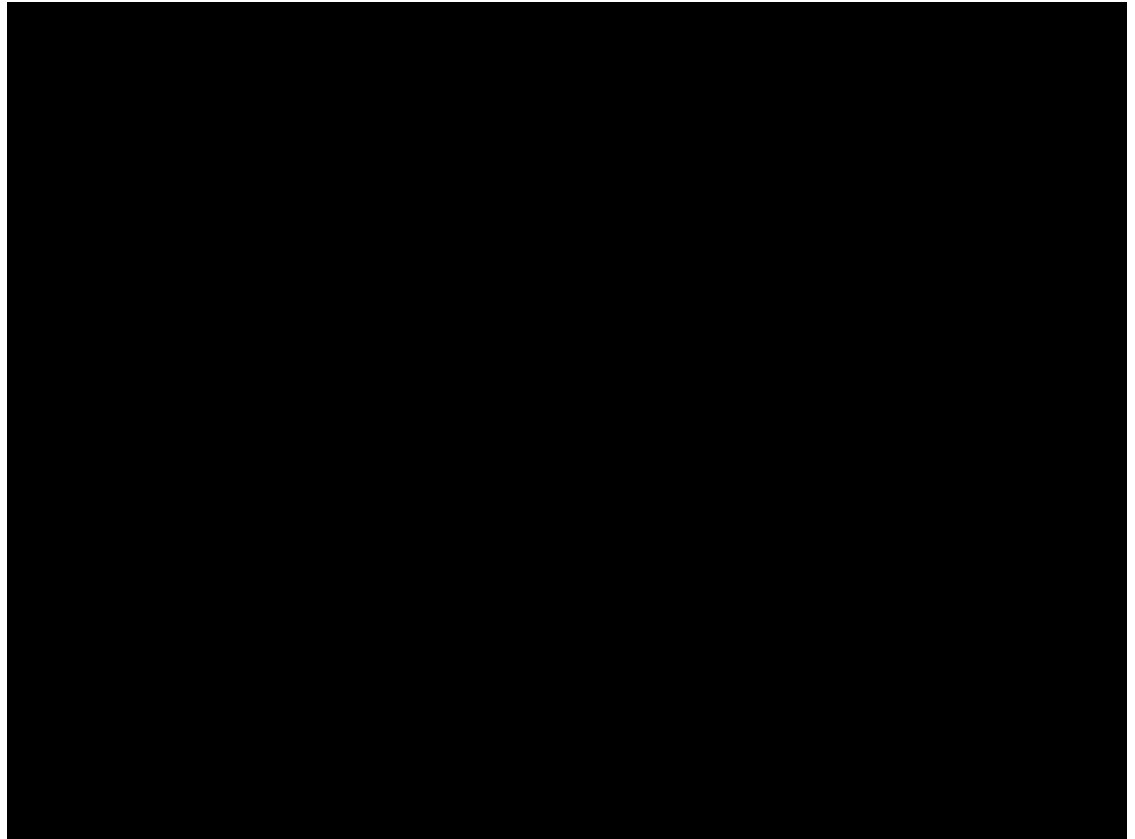
Develop long term landscape management plan

LAND AS A RESOURCE



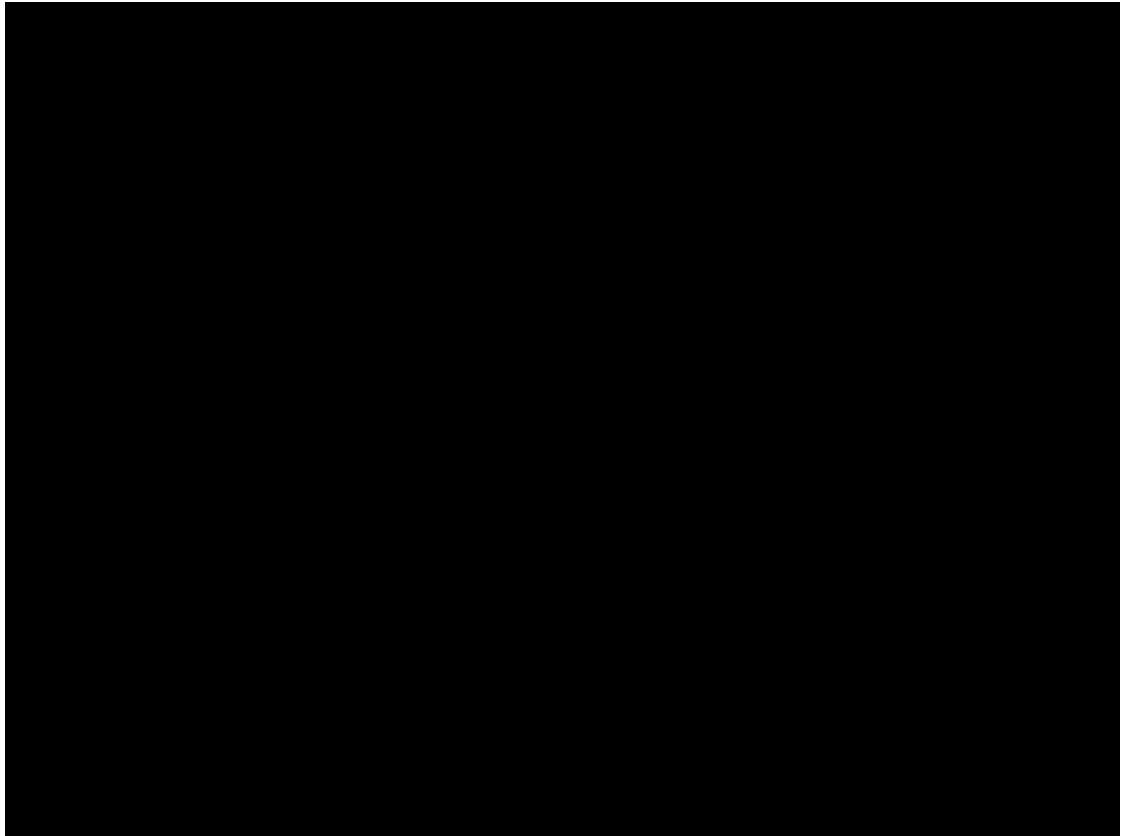
EFFECTS OF RAINFALL

HGOR



EFFECTS OF RAINFALL

HGOR



EXPANDED PARK

HGOR



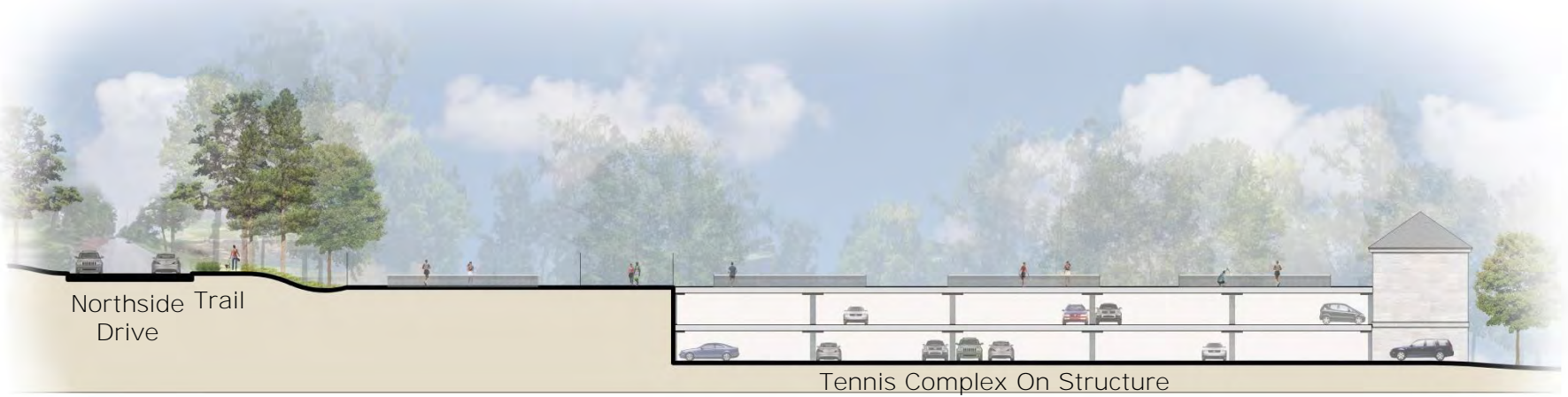
BITSY GRANT TENNIS CENTER CONCEPT HGOR



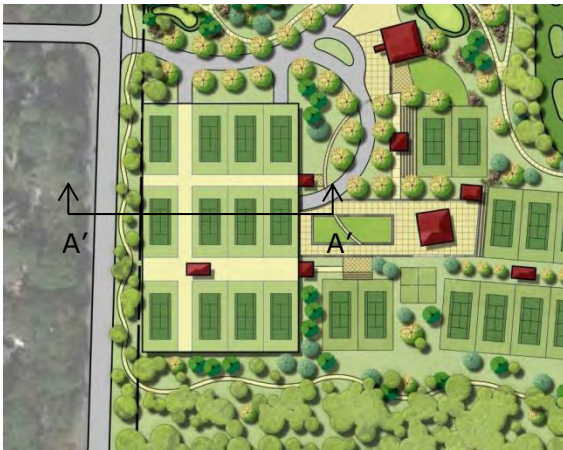
- A) Proposed Maintenance Facility
- B) Entry Drive to Golf/Tennis Center
- C) Proposed Pavilion/Walkway Between Tennis & Golf
- D) Proposed Tennis Court Additions
- E) Proposed Courts on top of Parking
- F) Proposed Tennis Plaza
- G) Existing Betsy Grant Clubhouse
- H) Bobby Jones Golf Course
- I) Proposed Bobby Jones Clubhouse
- J) Proposed Paddle Courts

BITSY GRANT TENNIS DETAIL

HGOR



Section B-B'



Proposed Enhancements